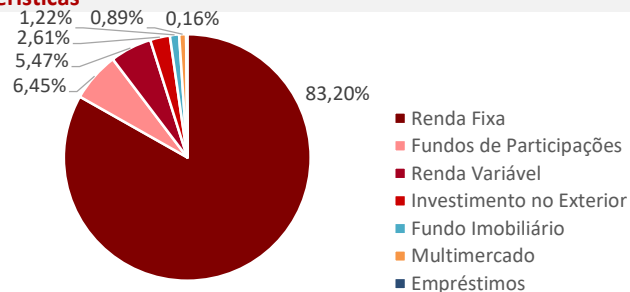


## Características



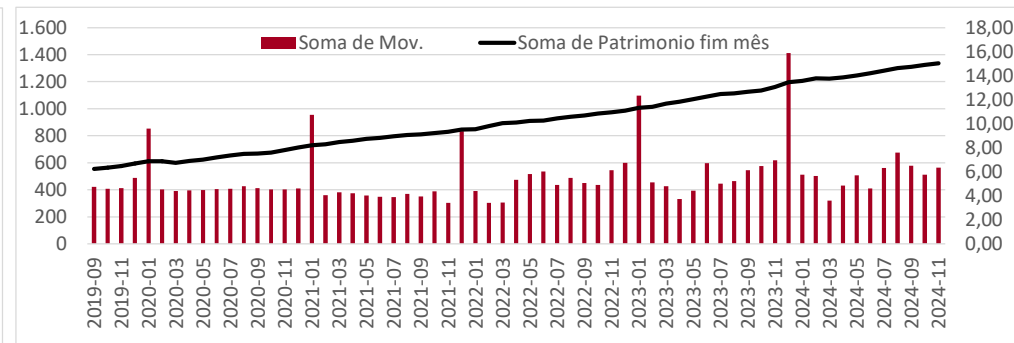
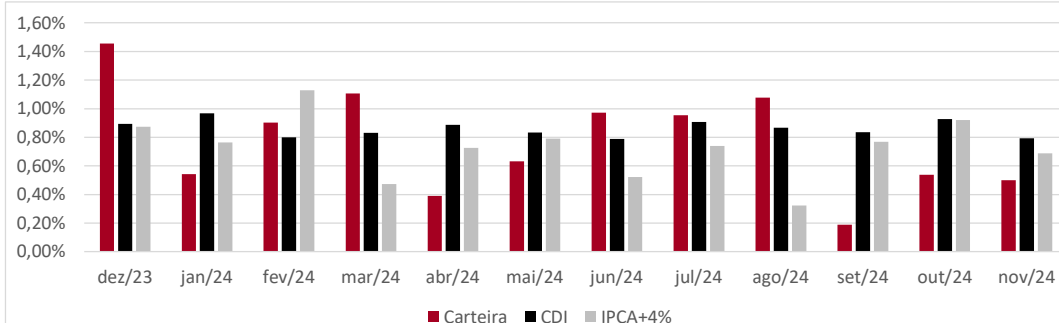
**Política de Investimentos:** Investe os recursos, principalmente, em cotas de fundos que atuam em diversos mercados, sem o compromisso de concentração em fator de risco específico.

Retorno (%)	Ano	12 meses	24 meses
Carteira	8,08%	9,64%	22,00%
CDI	9,85%	10,84%	25,57%
IPCA	4,29%	4,87%	9,78%
IPCA+4%	8,12%	9,07%	18,71%
IMA-B5	6,46%	8,02%	20,49%
Poupança	6,41%	7,02%	15,78%
IBOVESPA	-6,35%	-1,31%	11,72%
MSCI World	50,33%	54,56%	60,12%
MSCI Europe	27,11%	30,84%	35,55%

\* Cf. MP 567/12

## Gráficos

Retorno Mensal - Últimos 12 meses



Retorno Mensal (%)	nov/24	out/24	set/24	ago/24	jul/24	jun/24	mai/24	abr/24	mar/24	fev/24	jan/24	dez/23
Carteira	0,50%	0,54%	0,19%	1,08%	0,95%	0,97%	0,63%	0,39%	1,11%	0,90%	0,54%	1,46%
CDI	0,79%	0,93%	0,84%	0,87%	0,91%	0,79%	0,83%	0,89%	0,83%	0,80%	0,97%	0,89%
IPCA	0,39%	0,56%	0,44%	-0,02%	0,38%	0,21%	0,46%	0,38%	0,16%	0,83%	0,42%	0,56%
IPCA+4%	0,69%	0,92%	0,77%	0,32%	0,74%	0,52%	0,79%	0,72%	0,47%	1,13%	0,76%	0,87%
IMA-B5	0,36%	0,74%	0,40%	0,59%	0,91%	0,39%	1,05%	-0,20%	0,77%	0,59%	0,68%	1,46%
Poupança	0,57%	0,60%	0,57%	0,57%	0,57%	0,54%	0,59%	0,60%	0,53%	0,51%	0,59%	0,57%
IBOVESPA	-3,12%	-1,60%	-3,08%	6,54%	3,02%	1,48%	-3,04%	-1,70%	-0,71%	0,99%	-4,79%	5,38%
MSCI World	9,45%	3,90%	-2,06%	2,40%	3,59%	8,10%	5,64%	-0,45%	3,25%	4,74%	3,48%	2,81%
MSCI Europe	2,83%	-0,27%	-3,38%	3,61%	3,98%	3,53%	5,51%	1,01%	3,58%	2,01%	2,14%	2,93%



## Composição da Carteira

## Performance dos Fundos em Carteira

Mês

Ano

**12 meses**

### Início do investimento

## Patrimônio

Nome

Índice ref.

**% PL**

## Início

## Nominal

## Relativo

## Nomina

## Relativo

## Nominal

## Relativo

## Nominal

## Relativo

## Volatilida

R

milhões

Bela Cintra FI RF	IPCA+4%	36,88%	13/nov/13	0,76%	0,08%	8,84%	0,71%	10,11%	1,04%	244,96%	37,62%	0,42%	R\$	500,04
Itaú Institucional Optimus RF LP FICFI	CDI	6,60%	29/abr/22	1,16%	145,94%	11,40%	115,68%	12,54%	115,75%	36,04%	102,61%	0,72%	R\$	89,52
Itaú Institucional RF Referenciado DI	CDI	5,57%	15/fev/24	0,80%	100,64%					8,71%	103,76%	0,06%	R\$	75,55
Itaú Inst Global Dinâmico RF	CDI	4,78%	20/fev/20	0,82%	104,02%	9,93%	100,78%	11,23%	103,64%	51,77%	105,97%	0,59%	R\$	64,86
Itau Inst BOV11 FIC FIA	Ibovespa	4,51%	04/ago/23	-3,18%	-0,06%	-6,07%	0,28%	0,05%	1,35%	5,77%	0,62%	12,53%	R\$	61,22
BTGP Economia Real FIP Multi	IPCA+6,5%	3,79%	19/out/20	-0,16%	-1,03%	2,36%	-8,15%	2,19%	-9,50%	108,80%	39,99%		R\$	51,34
Itaú Institucionais Legend RF LP Fc	CDI	3,62%	02/out/19	1,09%	137,24%	12,36%	125,44%	13,92%	128,43%	61,40%	119,11%	1,44%	R\$	49,04
BNP Paribas Cred Inst FICFI RF CP LP	CDI	3,27%	11/out/23	0,83%	104,47%	10,55%	107,11%	11,69%	107,90%	13,55%	108,04%	0,07%	R\$	44,35
Itaú Inst RF Inflação 5 FICFI	IMA-B5	2,95%	19/jun/19	0,34%	-0,01%	6,28%	-0,18%	7,89%	-0,12%	55,64%	-1,61%	1,64%	R\$	39,97
Itaú Soberano RF Simples LP FICFI	CDI	2,01%	02/set/19	0,79%	100,17%	9,81%	99,52%	10,83%	99,99%	51,45%	98,40%	0,03%	R\$	27,28
XP Corporate Light FI RF CP LP	CDI	1,87%	24/jan/23	0,81%	102,37%	10,98%	111,44%	12,19%	112,54%	24,91%	107,79%	0,27%	R\$	25,40
Sul America Cred Institucional ESG FI R	CDI	1,74%	21/jun/23	0,83%	104,04%	12,25%	124,29%	13,45%	124,13%	21,61%	126,99%	0,32%	R\$	23,55
Vot Allianzgi Euro Eq Growth FIM IE	MSCI Europe	1,68%	22/mai/19	1,45%	-1,38%	21,01%	-6,10%	29,17%	-1,66%	100,97%	10,68%	16,88%	R\$	22,85
Porto Seguro RF DI CP	CDI	1,64%	18/jul/24	0,81%	101,74%					4,01%	104,55%	0,13%	R\$	22,22
Sul América Excellence FI RF CP	CDI	1,56%	24/jan/23	0,81%	101,66%	11,53%	117,00%	12,60%	116,24%	25,71%	111,25%	0,24%	R\$	21,21
Bradesco RF Referenciado DI Federal E	CDI	1,50%	12/ago/24	0,79%	99,34%					3,09%	98,37%	0,03%	R\$	20,31
Capitânia Premium FIC FIRF CP LP	CDI	1,48%	04/jun/21	1,02%	128,42%	9,69%	98,35%	10,67%	98,46%	44,44%	100,35%	0,95%	R\$	20,10
Bradesco Inst FIC FI RF IMA-B5	IMA-B5	1,40%	16/ago/23	0,33%	-0,02%	6,15%	-0,31%	7,75%	-0,27%	9,12%	-0,44%	1,67%	R\$	19,00
LFT	CDI	1,26%	05/dez/23	0,70%	88,00%	9,36%	94,99%			10,21%	95,61%		R\$	17,11
BTG Pactual Inv de Impacto FIP Mult	IPCA+6,5%	1,08%	30/ago/21	-0,08%	-0,95%	13,41%	2,90%	13,17%	1,48%	22,26%	-25,24%	21,92%	R\$	14,64
Inter Corporate RF Crédito Privado	CDI	1,04%	15/mai/24	0,81%	101,79%					5,83%	102,64%	0,07%	R\$	14,14
BTG Pactual Créd Corp I FIQFI RF CP	CDI	0,95%	30/ago/21	0,85%	107,27%	12,09%	122,68%	13,38%	123,53%	49,35%	115,29%	0,27%	R\$	12,84
Schroder Sustent Ações Globais IS IE	MSCI World	0,92%	24/mai/24	4,83%	-4,62%					19,83%	-9,51%	15,52%	R\$	12,51
Capitânia Reit Inst Fc FIM CP	IFIX	0,89%	25/jun/19	0,66%	2,77%	2,36%	7,62%	5,18%	6,41%	53,29%	32,54%	3,23%	R\$	12,04
MAG Renda Fixa FI	CDI	0,81%	13/set/23	0,80%	100,30%	10,02%	101,72%	11,12%	102,62%	13,97%	102,56%	0,22%	R\$	11,04
Santander RF Ref DI Tit Público Hiper	CDI	0,70%	21/nov/24	0,81%	101,74%					0,25%	101,12%	0,04%	R\$	9,49
BTG Pactual Explorer Inst FI RF LP	CDI	0,70%	13/mar/24	0,61%	77,02%					4,90%	65,13%	1,26%	R\$	9,47
AZ Quest Small Mid Caps Inst. FICFIA	SMLL	0,60%	09/jun/20	-0,40%	4,08%	0,40%	19,07%	6,20%	19,13%	15,87%	33,03%	11,79%	R\$	8,07
Rio Bravo Renda Varejo FI	IFIX	0,44%	20/dez/23	-3,60%	-1,49%	-7,55%	-2							

<b>Patrimônio Total:</b>	<b>R\$</b>	<b>1.355,96</b>
--------------------------	------------	-----------------